

CLCF
CENTRAL LOUISIANA
COMMUNITY
FOUNDATION

YEAR IN REVIEW

2
0
2
4



Who We Are

The Central Louisiana Community Foundation (CLCF) is at the heart of charitable giving in our region. Our mission is to connect donors to causes they care about, turning generosity into meaningful impact.

Every dollar entrusted to CLCF is dedicated to supporting charitable causes, ensuring that giving creates positive change where it's needed most. By bringing together donors and nonprofits, we strive to uplift our community and make a lasting difference for generations to come.



OUR MOTTO

UNITED IN GENEROSITY
fueled by purpose

LETTER FROM THE CHAIR



Dear Friends in Philanthropy,

As Chairman of the Central Louisiana Community Foundation (CLCF), I am honored to share this year's highlights and accomplishments with you. This past year has been a testament to the strength and resilience of our community and the extraordinary impact of collective giving.

This year, we proudly celebrated our 25th Anniversary—a milestone that highlighted a quarter-century of philanthropy, partnerships, and progress. It was a moment to reflect on the lives touched, the transformative projects undertaken, and the enduring legacy of service that defines CLCF. This celebration reminded us of the incredible foundation we have built together and inspired us to look forward with optimism and ambition.

As we move into the next 25 years, we are excited to build on this strong foundation and explore new opportunities to enhance our impact. The future holds immense promise, and we remain committed to driving meaningful change, strengthening partnerships, and creating a brighter tomorrow for Central Louisiana.

Thank you for your continued trust and investment in the Central Louisiana Community Foundation. Together, we are shaping a legacy that will resonate for generations to come.

Warm regards,

Darryl Monroe

Chairman, Board of Directors

TYPES OF FUNDS

Field of Interest

Field of Interest Funds are established to support unspecified programs or organizations in a general field of interest important to the donor, such as education, historic preservation, children, the elderly, the environment, or arts and culture.

Donor Advised Funds

Donor Advised Funds allow the donor to make recommendations for charitable distributions (grants) from the fund. Federal tax law requires that the Foundation make the ultimate decisions on grant distributions. CLCF makes every effort to follow donors' wishes.

Agency Funds

Agency Funds are established by a nonprofit organization to provide an annual source of income to support the organization's mission.

Scholarship Funds

Provide grants for educational purposes at both undergraduate and graduate levels. Donors may recommend an academic focus for their scholarship fund (such as nursing, the arts, or engineering) and eligibility criteria (including financial need, academic merit, geographic residence, and/or community service).

WHY GIVE?

EXPERTISE

For over 20 years The Central Louisiana Community Foundation has built a reputation for honesty and integrity. You benefit directly from CLCF's expertise in philanthropy, deep community knowledge, and highly personalized service. Let CLCF connect you with the priorities you care about and leave the administrative details to the Central Louisiana Community Foundation.



POWER OF ENDOWMENT

An endowment is a permanent fund which is designed to continue in perpetuity. The fund is invested and continues to grow through sound stewardship. Well-managed, endowed funds provide long-term stability and sustainability to charitable causes by deriving a perpetual income.



CREATE A LEGACY

Leave your mark on the future with a gift that will benefit generations to come. Start a legacy through a bequest, a deferred gift, or an endowed gift to the Central Louisiana Community Foundation. Creating a legacy is more than a donation- it ensures your values live on. Working with the Central Louisiana Community Foundation takes the worry out of giving. CLCF will be here to manage your legacy so that it will support generations to come.

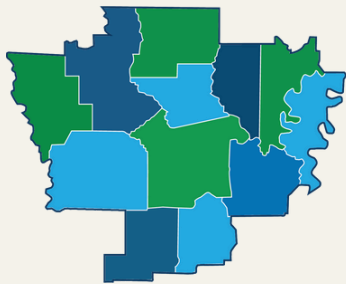


LEADERSHIP

This year, the Central Louisiana Community Foundation proudly highlights the leadership of Emily McGruder, who became Interim President and CEO in February 2023 and was named to the permanent role in July 2024. Emily has brought passion, expertise, and a bold vision to the Foundation, guiding us through a period of growth and transformation. Her focus on collaboration and innovation has strengthened our impact and reaffirmed our commitment to serving as a pillar of philanthropy in Central Louisiana.

In her remarks at the Celebration of Philanthropy, Emily captured the spirit of our mission, stating: "Together, we are united in generosity and fueled by purpose." Her leadership reflects this sentiment, as she works tirelessly to build a stronger, more vibrant community. Emily's dedication to empowering change, fostering meaningful partnerships, and addressing critical needs inspires confidence in the future of the Foundation.

As we look to the next 25 years, Emily's vision centers on amplifying our reach and continuing to make a lasting difference in the lives of those we serve. Under her guidance, the Foundation is poised to achieve even greater impact, ensuring that the legacy of generosity and purpose continues to flourish for generations to come.



CLCF
CENTRAL LOUISIANA
COMMUNITY
FOUNDATION



BOARD OF DIRECTORS

Darryl Monroe

Board Chair

RoyOMartin

Thomas David III

Member

Pan American
Engineers, LLC

Zeb Winstead

Member

Crowell and Owens, LLC.

Monte Wilson

Secretary

CHRISTUS Health

Tonita Laprarie

Treasurer

Cleco

Mike Chatelain

Member

Risk Services of Louisiana

David Thornton

Member

GrammaPro, LLC

Matt Richie

Member

Matt Richie Real Estate

Andy Cutrer

Member

Red River Bank

Paul Hargis, DDS

Member

Hargis Family Dental

Titan Marler

Member

BOM

Todd Leleux

Member

MetalCraft Manufacture

Laura Lyles

Member

Natchitoches Chamber of
Commerce



Emily McGruder
PRESIDENT/CEO



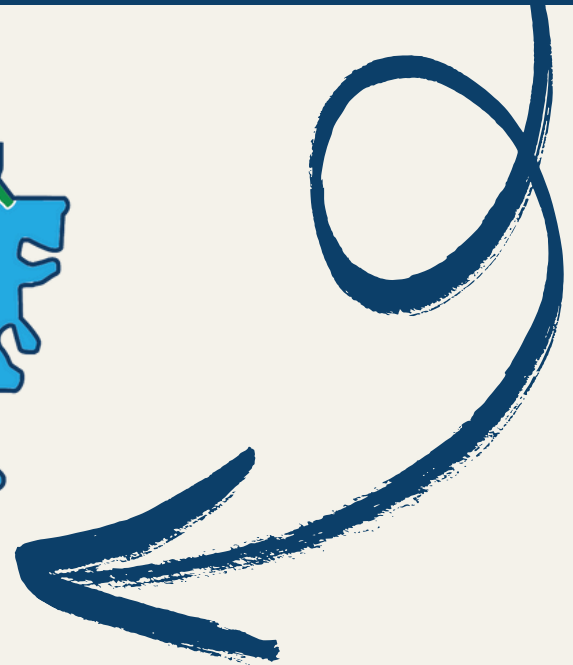
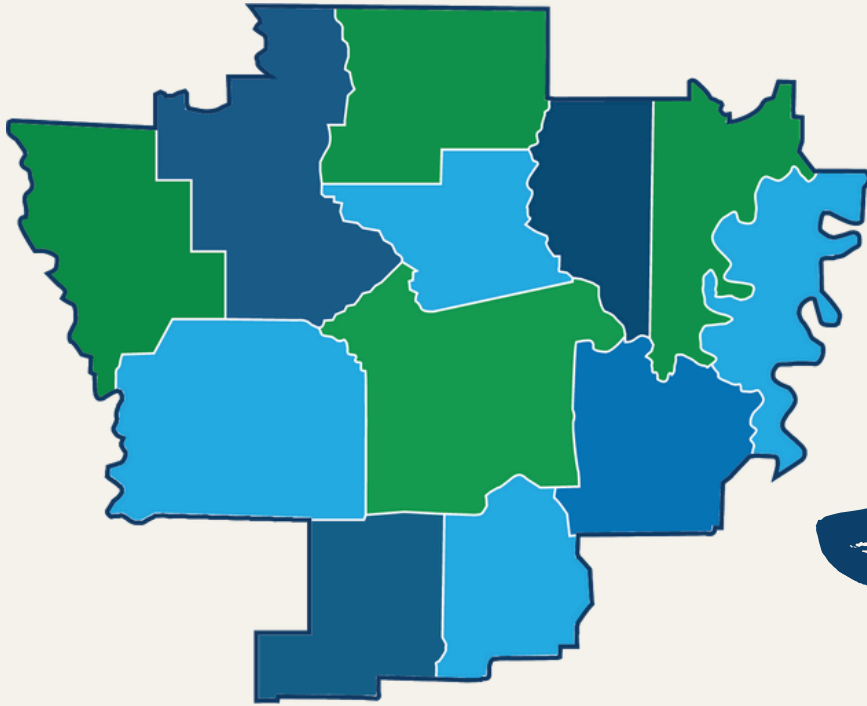
Debbie Jarred
OFFICE MANAGER



Mallori Miles
DIRECTOR OF
COMMUNICATIONS

Bettering Central Louisiana

\$3.2 Million Granted in 2024



With funds at an all-time high, we remain deeply committed to distributing resources where they are needed most. Every dollar entrusted to the Central Louisiana Community Foundation is a chance to create meaningful change.

We understand that the dollars we receive can only make a difference when they reach the hands of organizations and initiatives driving real impact. By intentionally directing funds back into our region, we are empowering local nonprofits and supporting the causes that strengthen our community.

2024 GRANT RECIPIENTS

Grants Endowment

- Sickle Cell Anemia Resource Foundation
- Sexual Trauma Awareness and Response
- Main Street Baptist Mission
- Catholic Charities of Central Louisiana
- Children's Advocacy Network
- Wounded Warrior Umpire Academy
- Volunteers of America South Central Louisiana
- Almost Home Behavioral Health Ministries
- Lakeview High School
- Junior League of Alexandria

Impact Award

- St. Mary's Residential Community & Services
- Natchitoches Chamber of Commerce



2024 GRANT RECIPIENTS

Quarterly Opportunity Grants

- Alpine Christian School
- Big Brothers Big Sisters of Southwest Louisiana
- Cenla Pregnancy Center
- Central Louisiana African American Historical Society
- Children's Advocacy Network
- Fine Arts Academy of Central Louisiana
- Fostering Community
- Hope House of Central Louisiana
- Junior League of Alexandria
- LSUA Veteran Support Initiative
- River Oaks Square Art Center
- Seeds 4 Trees
- Serving Grace
- Special Olympics Louisiana
- Starfish Ministries of Cenla
- T.R.E.E. House Children's Museum
- Womens Resource Center
- YWCA of Alexandria-Pineville





Celebrating 25 Years

On November 21, 2024, we gathered at the Coughlin-Saunders Performing Arts Center to honor the heart and spirit of giving in Central Louisiana. The **Celebration of Philanthropy** marked 25 incredible years of connecting donors to causes that matter and making a lasting impact in our community.

This unforgettable evening brought together donors, nonprofits, and community leaders to reflect on the power of generosity and recognize those who have made extraordinary contributions.

Thank you to everyone who joined us in celebrating this milestone and for continuing to make Central Louisiana stronger through the gift of giving!



FINANCIALS

CLCF is dedicated to responsibly managing the contributions from our kind donors. In our commitment to fostering a stronger community, we prioritize transparency and accessibility. The financial and investment details below are shared to uphold these principles. The presented figures are a snapshot of the financial statements of the Central Louisiana Community Foundation. This audited financial report is for the year ended March 31, 2024. For those interested, the full audited financial statements, conducted by Rozier, McKay & Willis, can be requested or accessed online at clcf.net.

Assets:

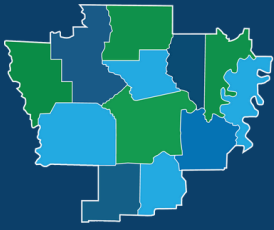
Cash and Cash Equivalents	\$ 135,321
Investments (Marketable Securities)	\$ 6,201,001
Total Current Assets	\$ 6,342,606
Assets Restricted for Long-Term Purposes	
Investments (Marketable Securities)	\$ 26,364,406
Total Assets	\$ 32,707,012

Liabilities:

Current Liabilities:	
Accounts Payable and Other Current Liabilities	\$ 17,770
Total Liabilities (Current)	\$ 17,770

Net Assets:

Without Donor Restrictions	\$ 6,324,837
With Donor Restrictions	\$ 26,364,405
Total Net Assets	\$ 32,689,242
Total Liabilities and Net Assets	\$ 32,707,012



CLCF
CENTRAL LOUISIANA
COMMUNITY
FOUNDATION

contact us

318-445-7702
www.clcf.net

PO Box 7432
1107 4th Street
Alexandria, LA 71306

